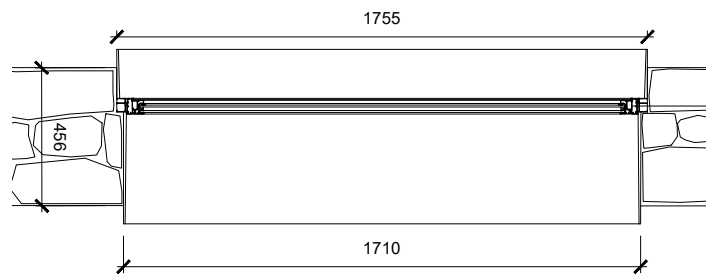


Existing windows to be replaced by new aluminium windows with feature reveals. Rake out joints in brick/stone and make good surrounds and re-point using lime based mortar in accordance with best conservation practice

Aluminium window frame and reveal

Typical Aluminium Window Elevation
1:25

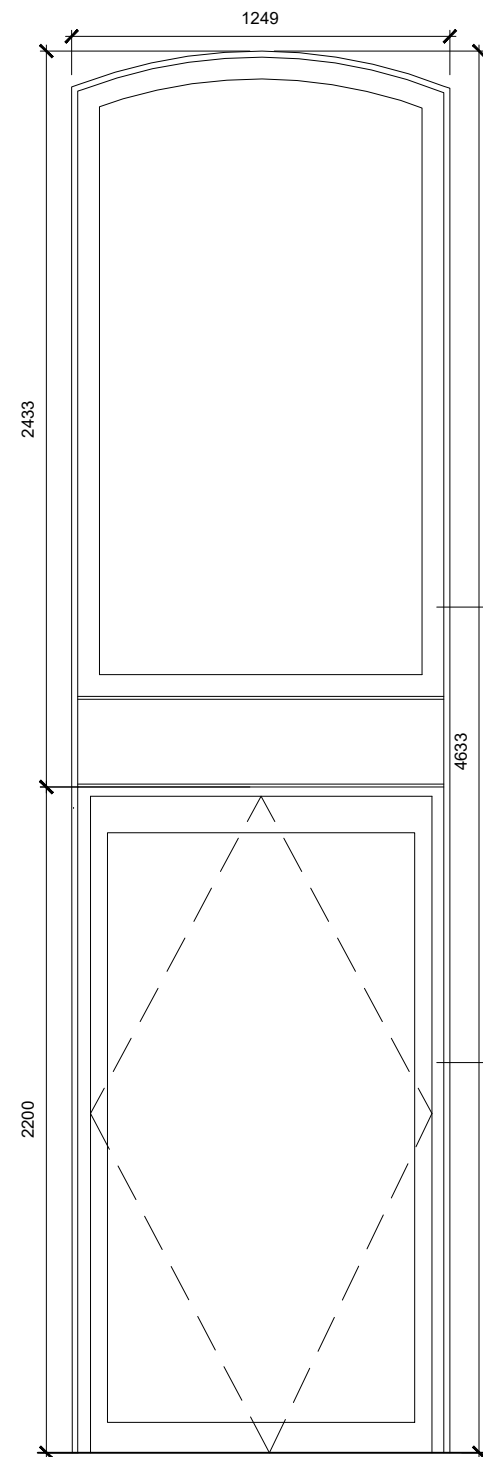


Aluminium window frame and reveal

Typical Aluminium Window plan
1:25



Typical aluminium window precedent photo
N.T.S.

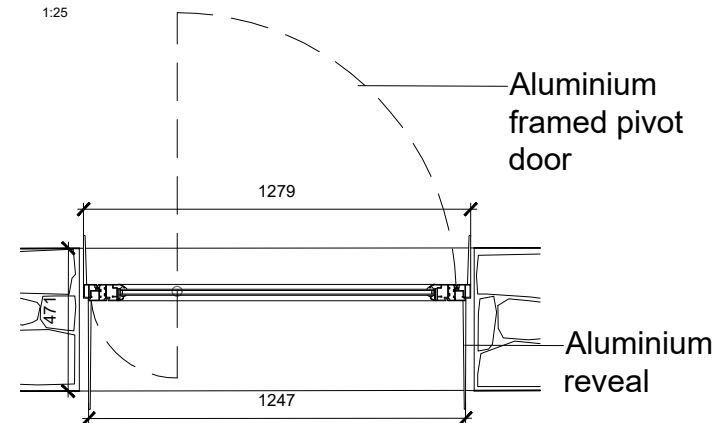


Existing window/door to be replaced by new aluminium window & door. Existing window opes to be lowered carefully removing existing masonry and make good surrounds and re-point using lime based mortar in accordance with best conservation practice

Aluminium framed window

Aluminium framed pivot door and reveal

Courtyard Aluminium Door Elevation
1:25

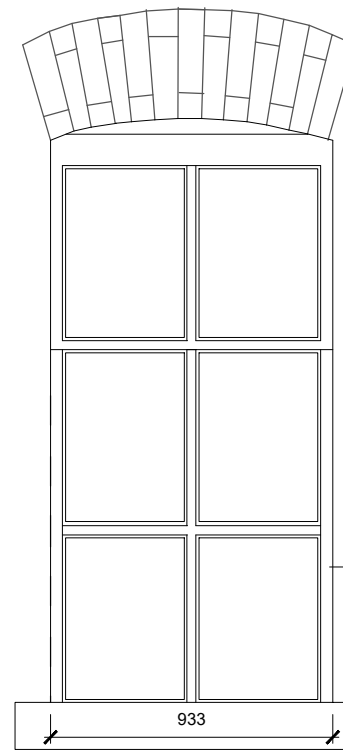


Aluminium framed pivot door

Aluminium reveal

Courtyard Aluminium Door plan
1:25

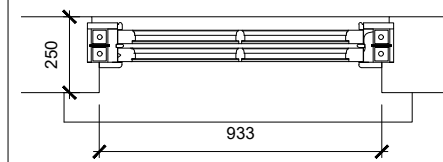
Refer to tower and river building proposed sheets accompanying the application for window and door locations



Existing timber windows to be replaced by new timber windows. Existing stone cills to be retained where possible or replaced with salvaged cills to match existing. Rake out joints in brick/stone and make good surrounds and re-point using lime based mortar in accordance with best conservation practice

Timber window frame

Timber Window Tower Elevation
1:25



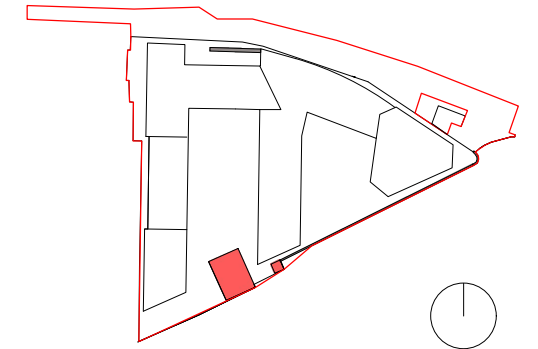
Timber Window Tower plan
1:25



Timber Window Precedent
N.T.S.

Notes:
DO NOT SCALE FROM THIS DRAWING. USE FIGURED DIMENSIONS IN ALL CASES. VERIFY DIMENSIONS ON SITE AND REPORT ANY DISCREPANCIES TO THE ARCHITECTS IMMEDIATELY. THIS DRAWING TO BE READ IN CONJUNCTION WITH THE ARCHITECTS SPECIFICATION. © THIS DRAWING IS COPYRIGHT AND MAY ONLY BE REPRODUCED WITH THE ARCHITECTS PERMISSION.

Drawing Notes:



P02	27/01/20	EOB	Full Planning ABP issue
P01	14/06/19	EOB	Pre-Planning ABP issue

Rev	Date	DRN	Description
-----	------	-----	-------------



Reddy Architecture + Urbanism
Dartry Mills,
Dartry Road
Dublin 6, D06 Y0E3.
T: +353 (0)1 4987000
W: www.reddyarchitecture.com
E: info@reddyarchitecture.com

Client Details:
Ruirside Developments Ltd.

Project Details:
PGATE
42A Parkgate St, Dublin 8

Drawing Title:
Window and Door Intervention
Study 02

Job No	Date	Scale@A1
P18-107D	27.01.20	1 : 25

Status	Drawn By:
Planning	J.Basquel

Purpose	Checked By:
Planning Permission	D O'Donnell

Drawing Number	Revision
PGATE-RAU-ZZ-ZZ-DR-A-HTG-31142	P02

Window Type	LGW1	LGW2	LGW3	LGW4	LGW5	LGW6
-------------	------	------	------	------	------	------

NOTE 1 Window to be replaced with aluminium frame window

Door Type	LGD6	LGD7	LGD8
-----------	------	------	------

NOTE 7 Existing window opes to be dropped and and double glazed low-E glass aluminium doors to be introduced

Window Type	TW1	TW2	TW3
-------------	-----	-----	-----

NOTE 19 Existing window to be replaced with new window